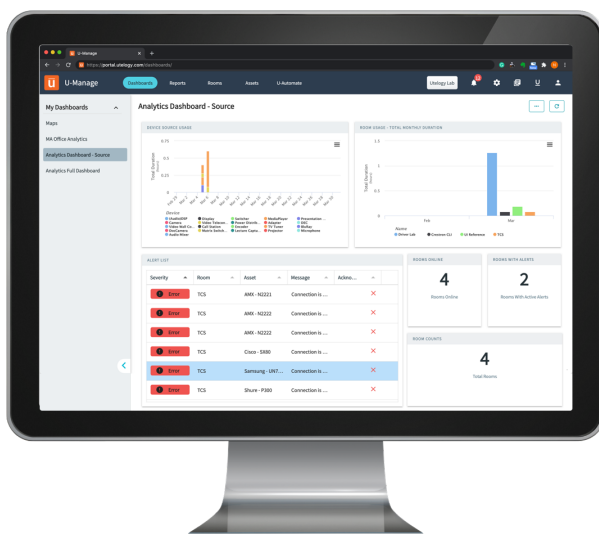


UTELOGY'S U-MANAGE

Building an Actionable Intelligent World



Every year, enterprises around the world look for ways to improve employee productivity. Technology is deployed to improve collaboration and enhance productivity, but then the technology often proves unreliable and becomes the very reason for lost time during meetings. Organizations are trying to find cost effective ways of optimizing workspaces and the technology in those spaces.

REMOTE MANAGEMENT: MOVING FROM REACTIVE TO PROACTIVE

U-Manage provides Audio-Visual management and monitoring to move from reactive to proactive support. The system allows users to assess the health of the AV landscape and detect issues prior to impacting service. With U-Manage, IT and AV managers can:

- Minimize business disruption
- Increase efficiency and quality of collaboration technology
- Understand how meeting rooms and technology are used
- Identify meeting space trends by geography, room type, etc. to optimize behavior
- Improve the overall user experience
- Decrease operational costs
- Optimize future real estate and technology spends

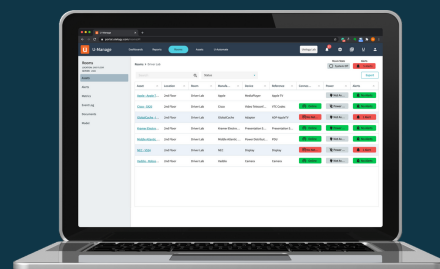
With Uteology's U-Manage, you can bridge the gap between people, workspaces, and technology.



THE UTELOGY ADVANTAGE

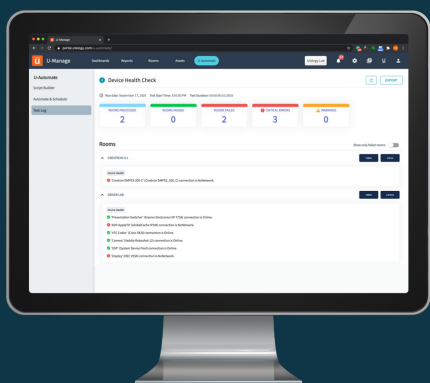
Uteology delivers strategic benefits so you don't have to abandon your flexibility technology investment and have flexibility to make choices in the future.

- Single platform for control, automation, monitoring and management
- Open architecture with support for standard web technologies including Telnet, SSH, HTTP(S), SNMP, ICMP
- Hardware agnostic with the ability to integrate new devices and new protocols
- Simple configuration as opposed to complex programming
- Room and device alerts and analytics
- Ability to automate preventive maintenance
- Hardware and asset management
- REST API to integrate to other enterprise systems
- Data Connectors for BI tools
- Multiple 3rd party integrations
 - Cisco Telepresence Touch
 - Zoom Room
 - Logitech Sync
 - USB Device Monitoring



REVOLUTIONIZING PRODUCTIVITY AND USER EXPERIENCE UNDER A SINGLE PANE OF GLASS

With its enterprise landscape visibility, the Utelogy platform delivers a dashboard and reporting environment where users can gather and consolidate data from workspaces across the enterprise to gain actionable intelligence.



“Most remote fixes are down to 2 or 3 minutes and if we have a physical fix, it’s 5 to 8 minutes of downtime, and that’s dramatically improved the experience. The solution gave us the freedom to expand, make changes, and manage the systems with ease.”

Rich Avila, Director of Classroom Technology, California State University, East Bay



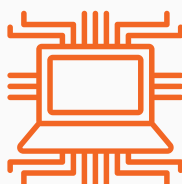
REMOTE MONITORING, ALERTS & REPORTING

Monitor devices, rooms, systems, connectivity status and usage in real-time.



MANAGEMENT AND PROVISIONING

Perform bulk provisioning and firmware updates to all devices across the enterprise.



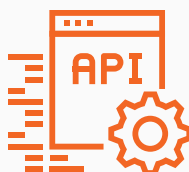
GLOBAL ARCHITECTURE

Multi-data center architecture for redundant data storage, data sovereignty and enhanced performance.



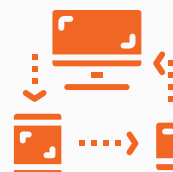
USER MANAGEMENT

Create and share custom dashboards and data for business analysis and future project planning.



UTELOGY APIS

REST API to integrate to other enterprise ERP and BI Data Connectors for analytics insights with tools like Microsoft BI or Tableau.



INTEGRATIONS

Integrate with third-party UCC and video conferencing applications for a seamless AV experience



AUTOMATION

Build and schedule scripts to eliminate manual processes and enhance operational productivity.



ASSET MANAGEMENT

Integration with ERP systems to track and control assets, warranties, spares, and replacements.