

ThinkSmart Hub

Whether you're outfitting a large enterprise or a small start-up, ThinkSmart Hub offers smarter collaboration technology for conference rooms of all sizes. This latest generation all-in-one Zoom Rooms system offers richer audio with full duplex speakers and dual array mics integrated in an even smaller, sleeker device.

In addition to being built on the familiar Zoom Rooms platform, ThinkSmart Hub is easy to manage using Lenovo's custom-built ThinkSmart Manager software* along with the more personalized approach of Lenovo's optional Smart Office Professional Services. Combine all this with the built-in protection of Lenovo's ThinkShield security solutions and Intel vPro® platform, and you have a powerful tool for helping teams large and small to connect, share, and collaborate.

*Included for first year and available at an additional cost on subscription basis after that.



Smarter
technology
for all

Lenovo

ThinkSmart Hub



BUILT FOR COLLABORATION

Built on the Zoom Rooms platform your employees already know and use, ThinkSmart Hub lets participants communicate via video, voice, or chat to collaborate about content in real time. Its rotatable 10.1-inch touchscreen display makes it easy for members of the group to share control of the meeting.



CLEANER LOOK AND SOUND

The newly redesigned ThinkSmart Hub delivers outstanding audio quality while taking up less space than ever before. It features four built-in full duplex speakers and four built-in dual array mics for fully immersive 360-degree sound. Plus, it is ultra-low noise certified for even better acoustic design. Sound isn't the only thing that stays clear. With a 20% smaller footprint than previous generations and the addition of ThinkSmart One Cable mechanism, ThinkSmart Hub also reduces tabletop clutter for a cleaner, neater space.



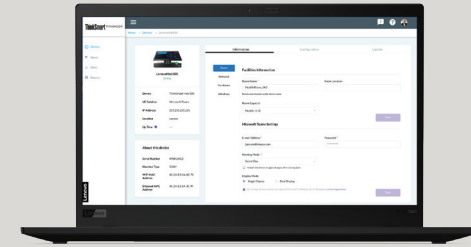
INCREDIBLY PRODUCTIVE

One-touch meeting start makes it easy for any participant to initiate a Zoom voice or video conference without dial-in delays. ThinkSmart Hub also keeps IT professionals more productive thanks to Lenovo's preloaded ThinkSmart Manager software.* This enables you to monitor, manage, and troubleshoot any number of ThinkSmart Hub devices from one, centralized location. Lenovo's optional Smart Office Professional Services provide additional, personalized support every step of the way.



ALWAYS SECURE

Teams can collaborate fearlessly knowing ThinkSmart Hub is backed by Lenovo ThinkShield, the most comprehensive, end-to-end security solution on the market that combines industry-leading secure hardware, software, services, and processes. This includes options for BIOS locking, I/O locking, and USB Smart Lock. These security solutions are further complemented by the Intel vPro® platform, which brings together the best of Intel innovations to better safeguard data and devices, while a Kensington™ MiniSaver lock slot protects against physical theft.



Lenovo ThinkSmart Manager

This proprietary, optional manageability console gives your IT team the power to deploy, monitor, and troubleshoot your entire fleet of Lenovo ThinkSmart devices all from one place.

Leverage a single console to remotely deploy, manage, configure, update, and resolve issues

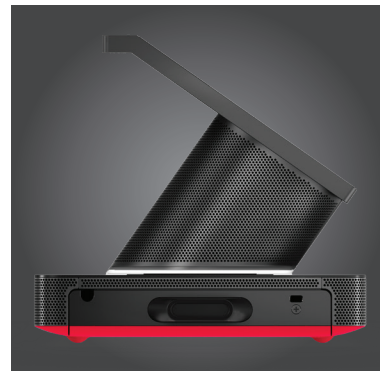
See real-time status by device and receive live at-a-glance issues lists

Streamline actions across multiple devices with "apply all" option

Generate reports to keep tabs on device issues and trends

Take advantage of elevated security options

*Included for first year and available at an additional cost on subscription basis after that.



ThinkSmart Hub

performance

PROCESSOR

Intel Core™ i5-8365U vPro®

OPERATING SYSTEM

Windows® 10 IoT Enterprise SAC 64 bit

MEMORY

8 GB (Dual-Channel) DDR4-2400 MHz

STORAGE

128 GB PCIe TLC SSD

GRAPHICS

Intel UHD Graphics 620

AUDIO

4x premium-tuned speakers

4x omnidirectional mics for 360-degree audio capture

SENSORS

IR-based human proximity sensor

INDICATOR LIGHTS

LED status light on hinge and top of screen

security

TPM 2.0

Kensington™ MiniSaver lock slot

ThinkSmart One Cable

connectivity

INPUT PORT

1x HDMI-In

USER ACCESSIBLE AND THINKSMART ONE CABLE PORTS

2x HDMI-Out

1x RJ45 Gigabit Ethernet

3x USB-A 3.2 Gen 1

1x USB-C 3.2 Gen 1

1x 3.5 mm audio (on base)

WIFI

WLAN 802.11 AC (2 x 2)

Bluetooth® Low Energy (LE) 5.0



design

DISPLAY

10.1" touch screen (1920 x 1080 resolution, 320 nits) with 16:10 aspect ratio, 360-degree rotatable, anti-glare and smudge resistant

DIMENSIONS (W X D X H)

240.0 x 200.0 x 185.3 mm

9.45 x 7.87 x 7.30 in

WEIGHT

2.47 kg/5.45 lbs.

manageability

ThinkSmart Manager

LANGUAGES SUPPORTED

English

French

Japanese

warranty

Base: 3 Year Onsite + Premier Support

optional services

PREMIER SUPPORT

Bypass phone menus and scripted troubleshooting to access advanced-level technicians with the expertise needed to quickly diagnose and solve problems. Get a consistent point of contact within Lenovo to ensure that your case resolution is professionally managed from start to finish.^{1,2}

PROFESSIONAL SERVICES FOR SMART OFFICE

Personalized services to maximize results. Lenovo's Smart Office Professional Services provide custom services tailored for the Smart Office lineup, so you can make the most of these cutting-edge collaboration solutions.²

WARRANTY EXTENSION

This fixed-term, fixed-cost service helps you accurately budget for PC expenses, protect your investment, and lower the cost of ownership over time.¹

¹Up to 5 years total duration

²May not be available in all regions



Smarter meetings start with ThinkSmart.
Learn more at www.lenovo.com/ThinkSmart

©2020 Lenovo. All rights reserved. These products are available while supplies last. Prices shown are subject to change without notice. For any questions concerning price, please contact your Lenovo Account Executive. Lenovo is not responsible for photographic or typographic errors. Warranty: For a copy of applicable warranties, write to: Warranty Information, 500 Park Offices Drive, RTP, NC 27709, Attn: Dept. ZPYA/B600. Lenovo makes no representation or warranty regarding third-party products or services. Trademarks: Lenovo, the Lenovo logo, Rescue and Recovery, ThinkPad, ThinkCentre, ThinkSmart, ThinkStation, ThinkVantage, and ThinkVision are trademarks or registered trademarks of Lenovo. Intel, the Intel logo, Intel Inside, Intel Core, and Core Inside are trademarks of Intel Corporation in the U.S. and/or other countries. Zoom Rooms is a registered trademark of Zoom Video Communications, Inc. Other company, product and service names may be trademarks or service marks of others.

Lenovo