



UC GUIDE

logitech® for
 Google Cloud



Contents

Introduction	05
Logitech room solutions for Google Meet™	06
Logitech Small Room Solution for Google Meet	07
Logitech Medium Room Solution for Google Meet	08
Logitech Large Room Solution for Google Meet	09
Technical Specifications	10
Logitech Accessories	11
Logitech Scribe	13
Headsets and Personal Video Cameras	14
Google Certified Headsets	15
Logitech C925e Personal Webcam	16
Logitech Personal Video Collaboration Kits	17
Logitech Management Tools	18
Introducing Logitech Sync	19
Monitoring	20
Management	21
Insights	22



Logitech + Google / Tap into Google Meet

Introduction

Video conferencing systems for small, medium, and large rooms preconfigured for Google Meet™

Logitech Room Solutions for Google Meet include everything you need for video meetings. Available in small, medium, and large configurations, these pre-configured systems include a Logitech conferencecam, Meet compute system, a mount with cable retention, and the Logitech Tap touch controller.

Auto-level loud and soft voices – while suppressing unwanted noise – with AI-based RightSound™ technology that improves over time.

Easily monitor and manage your meeting room devices from Google Workspace Admin Console or Logitech Sync. Plus, get business insights into how your rooms are being used.



Logitech MeetUp



Small Room
(up to 6 people)

Logitech Rally



Medium Room
(up to 16 people)

Logitech Rally Plus



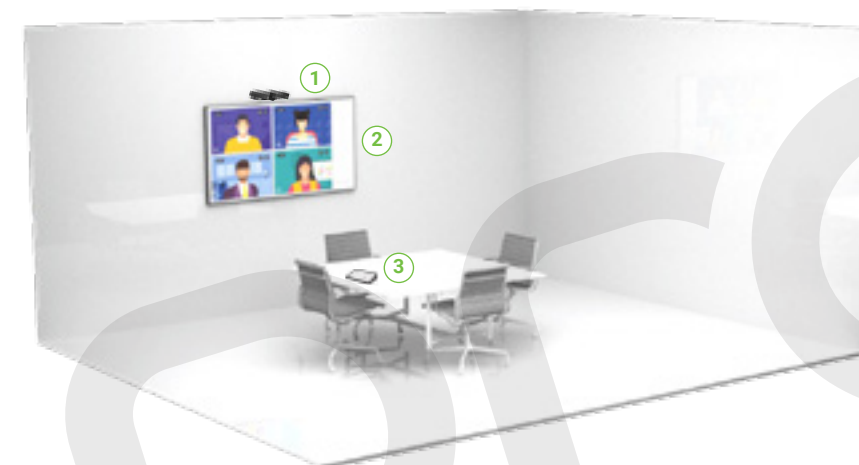
Large Room
(16 - 46 People)

Logitech Room Solutions for Google Meet include everything you need for video meetings. Available in small, medium, and large configurations, these pre-configured systems include a Logitech conferencecam, Meet compute system, a mount with cable retention, and the Logitech Tap touch controller.



Logitech room solutions for Google Meet™ simple meeting room solutions

Logitech Small Room Solution for Google Meet



Pre-configured Video Conferencing

Logitech Meetup provides an all-in-one video and audio solution that includes everything you need to deploy video conferencing to small rooms for up to 6 people. It is certified for Google Meet and comes pre-configured with

an Ultra HD 4k video and sound bar, Tap Touch Controller with touch-to-join, Google approved Meet compute system, and a mount with cable retention.

1



Logitech Meetup

- All-in-One conferencecam with an extra-wide field of view and integrated audio.
- See everyone, even those close to the camera.
- RightLight™ and RightSound™ technologies for clear video and front-of-room audio.
- Compact design minimises cabling and clutter.

2



Google Meet Compute System

- Core i7, up to 4.0GHz, 4GB RAM, 128GB SSD, Chrome OS, Kensington Lock.
- Clean installation - Install in a cabinet, beneath a table, or behind a display.
- Google-approved compute system with Meet specific version of Chrome OS.

3



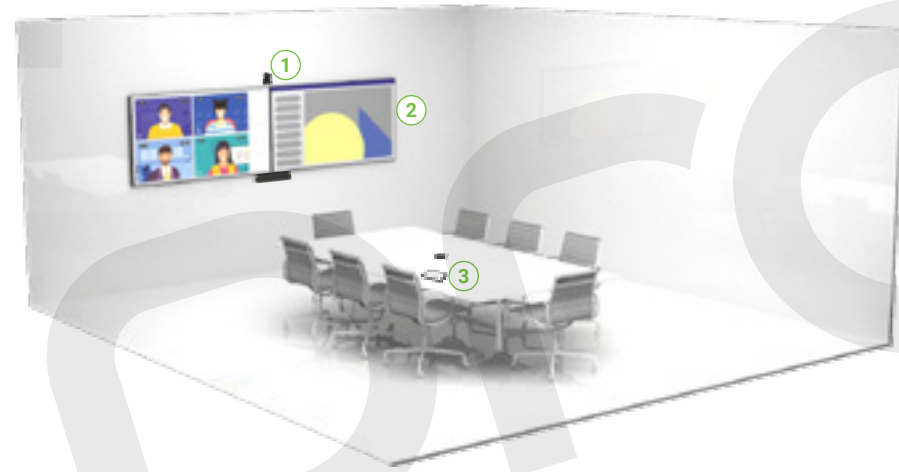
Logitech Tap

- Touch controller for room solutions with One-touch Join
- Responsive 10.1" touch screen.
- Commercial-grade cabling and cable management.
- Supports both wired and wireless DirectShare content sharing.
- Optional Table and Riser mounts add convenience and rotate 180° for easy viewing. Or, add a Wall Mount to save space in small and multipurpose rooms.

Pre-configured Video Conferencing

Transform any medium-sized meeting room into a Google Meet video collaboration space. The Logitech Rally is an all-inclusive system, certified for Google Meet and comes pre-configured

with a Premium 4k Ultra HD camera, mic pod, front of room speaker, Tap Touch Controller with touch-to join and Google-approved Chromebox with Chrome OS.



Logitech Medium Room Solution for Google Meet

1



Logitech Rally

- Premium Ultra-HD conferencecam system for mid-size room.
- RightLight with WDR shows participants in flattering light, even in dim or backlit conditions.
- Front-mounting speaker and tabletop mic pod with RightSound for directional audio with reduced noise and echo.
- Premium components and sleek industrial design.

2



Google Meet Compute System

- Core i7, up to 4.0GHz, 4GB RAM, 128GB SSD, Chrome OS, Kensington Lock.
- Clean installation - Install in a cabinet, beneath a table, or behind a display.
- Google-approved compute system with Meet specific version of Chrome OS.

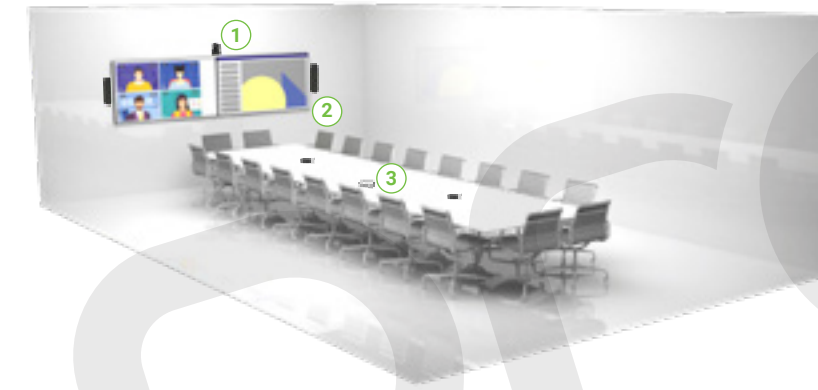
3



Logitech Tap

- Touch controller for room solutions with One-touch Join
- Responsive 10.1" touch screen.
- Commercial-grade cabling and cable management
- Supports both wired and wireless DirectShare content sharing.
- Optional Table and Riser mounts add convenience and rotate 180° for easy viewing. Or, add a Wall Mount to save space in small and multipurpose rooms.

Logitech Large Room Solution for Google Meet



Pre-configured Video Conferencing

Quickly and easily transform any large meeting room into a Google Meet video collaboration space. The Logitech Rally Plus is an all-inclusive system, certified for Google Meet and comes pre-configured with a Premium 4k Ultra

HD camera, dual mic pods, 2 front of room speakers, Touch Controller with touch-to-join, and the Google-approved Chromebox with Chrome OS.

1



Logitech Rally Plus

- Premium Ultra-HD conferencecam system for larger rooms.
- Adds a second speaker and second mic pod for expanded coverage.
- Expand with additional mic pods (up to 7 total) for rooms with up to 46 people
- Large configurations add a Rally Mic Pod Hub for under-table cable routing.

2



Google Meet Compute System

- Core i7, up to 4.0GHz, 4GB RAM, 128GB SSD, Chrome OS, Kensington Lock.
- Clean installation - Install in a cabinet, beneath a table, or behind a display.
- Google-approved compute system with Meet specific version of Chrome OS.

3



Logitech Tap

- Touch controller for room solutions with One-touch Join
- Responsive 10.1" touch screen.
- Commercial-grade cabling and cable management.
- Supports both wired and wireless DirectShare content sharing.
- Optional Table and Riser mounts add convenience and rotate 180° for easy viewing. Or, add a Wall Mount to save space in small and multipurpose rooms.

Logitech Accessories

Room Size	Small Room	Medium Room	Large Room
Conference Camera	Logitech MeetUp	Logitech Rally (1 speaker, 1 mic pod)	Logitech Rally Plus (2 speakers 2 mic pods)
Logitech Tap Touch Controller	✓	✓	✓
Meet Computer System Mount	✓	✓	✓
Google-Approved Meet Computer System	✓	✓	✓
Rally Mounting Kit		✓	✓
Rally Mic Pod Hub			✓
Optional Accessories	Tap Table Mount Tap Riser Mount Tap Wall Mount Expansion Mic for MeetUp TV Mount for MeetUp Swytch	Tap Table Mount Tap Riser Mount Tap Wall Mount Rally Mic Pod (up to 7 total) Rally Speaker (up to 2 total) Rally Mic Pod Hub Rally Mic Pod Mount Rally Mic Pod Extension Cable Swytch	Tap Table Mount Tap Riser Mount Tap Wall Mount Rally Mic Pod (up to 7 total) Rally Mic Pod Hub Rally Mic Pod Mount Rally Mic Pod Extension Cable Swytch

Technical Specifications



PC MOUNT

Included with all room solutions, the mount secures the supplied PC to a wall or beneath a table, and includes a cable retention bracket to keep USB, HDMI, power, and network cables tight and secure.



PC TABLE MOUNT

Secures Tap to a grommet while maintaining a low profile. Swivels 180° for convenient operation from both sides of the table.



RISER MOUNT

Secures Tap to a grommet and raises the viewing angle to 30° for better visibility from across the room. Swivels 180° for convenient operation from both sides of the table.



WALL MOUNT

Conserves table space by mounting Tap flush to the wall with a sturdy plate and cleat design.



TV MOUNT FOR VIDEO BARS

Securely mount your video bar above or below a TV or Monitor.



WALL MOUNT FOR VIDEO BARS

Neatly and confidently secure your video bar on the wall for minimal footprint.



RALLY MIC POD

Add Rally Mic Pods to expand audio coverage and provide convenient access to mute controls.



LOGITECH SWYTCH

Adds the ability to use the AV equipment in Google Meet with any video conferencing software, webinar platform, or streaming service. Simply plug in a laptop to start a new meeting.



Whiteboard Camera for Video Conferencing Rooms

Designed for whiteboard sharing in the modern workplace, Logitech Scribe broadcasts content on dry erase boards into video meetings with outstanding clarity. Now, even remote participants can have the best seat at the table. With a clean wall-mounted design and thoughtful cable management, Scribe installs elegantly and out of the way of meeting collaboration. Together with the whiteboard content camera, Scribe includes a wireless share button, mounting components, power supply, and category cables for deployment at scale.

Features & Benefits

- > Effortlessly share whiteboards into video meetings with Logitech Scribe, an AI-powered whiteboard camera for Google Meet and other leading video conferencing services.
- > Works with all whiteboard surfaces, capturing up to 6' W by 4' H, and any set of dry erase markers.
- > Scribe's wireless share button makes sharing whiteboards into video meetings quick and easy. You can also initiate sharing with your meeting room touch controller, like Logitech Tap.
- > Presenter Removal Scribe's built-in AI delivers a transparency effect, allowing participants to see "through" the presenter for an unobstructed view of the whiteboard.
- > Content Enhancement Scribe automatically enhances the colour and contrast of dry erase markers, making text and sketches easier to read.
- > Sticky Note Detection Scribe uses image segmentation to recognize and show other forms of content like sticky notes.

Google Certified Headsets



Headsets and Personal Video Cameras

Logitech Zone Wired Headset



- Durable wired headset designed for busy open workspaces
- Open Office-certified using noise-cancelling dual mic technology
- Works with Windows, macOS, or Chrome OS based computer with available USB-C or USB- port
- Voice prompts for mute on/off
- 270 degree rotation (wear the microphone boom on either left or right)
- Google Certified

Logitech Zone Wireless Headset [®]



- Designed for mobile workers, Zone Wireless provides the versatility to wirelessly connect to your computer, tablet, and smartphone simultaneously
- Immersive sound (great for music and talking)
- Active noise cancelling mic
- Wireless range: Up to 30m (open field of sight)
- Works with Windows, macOS, or Chrome based computer via USB-C, USB-A, Bluetooth and iOS or Android Bluetooth enabled devices
- 270 degree rotation (wear the microphone boom on either left or right)
- Google Certified

Logitech Personal Video Collaboration Kits

The C925e is brilliantly designed for anyone looking to enhance their day-to-day video collaboration. USB plug-and-play connectivity makes it a breeze to set up and operate. It even works with any video conferencing software application, including the ones you already use.

Features:

- > HD 1080p video at up to 30 frames per second
- > UVC H.264 encoding technology
- > 78° field of view
- > Omni-directional dual stereo microphones
- > Convenient privacy shutter
- > Logitech RightLight™ 2 technology and autofocus
- > Easy-to-use
- > Multiple mounting options
- > Certified for Microsoft Teams® and works with all popular calling platforms



Wired Personal Video Collaboration kit



- Includes C925e webcam + ZONE WIRED Headset
- Full HD video calling (up to 1080p)
- 78° diagonal field of view
- Rightlight 2 Technology for clarity in various lighting environments, even low light
- Autofocus
- Integrated privacy shade
- 2 omni directional mics
- Hi-speed USB 2.0 certified (USB 3.0 ready)
- Tripod-ready universal clip fits laptops, LCD, or CRT monitors
- Google Certified

Personal Video Collaboration kit



- Includes C925e webcam + ZONE WIRELESS Bluetooth headset
- Razor-sharp video at an amazingly affordable price
- Resolution/FPS: Full HD 1080p/30fps, HD 720p/30fps
- Sensor resolution: 1920 x 1080
- Diagonal field of view of 78°
- Autofocus
- Digital zoom (Full HD): 1.2x
- Auto Light Correction: RightLight™ 2
- USB plug-and-play, Multiple mounting options, Integrated privacy shade
- Google Certified

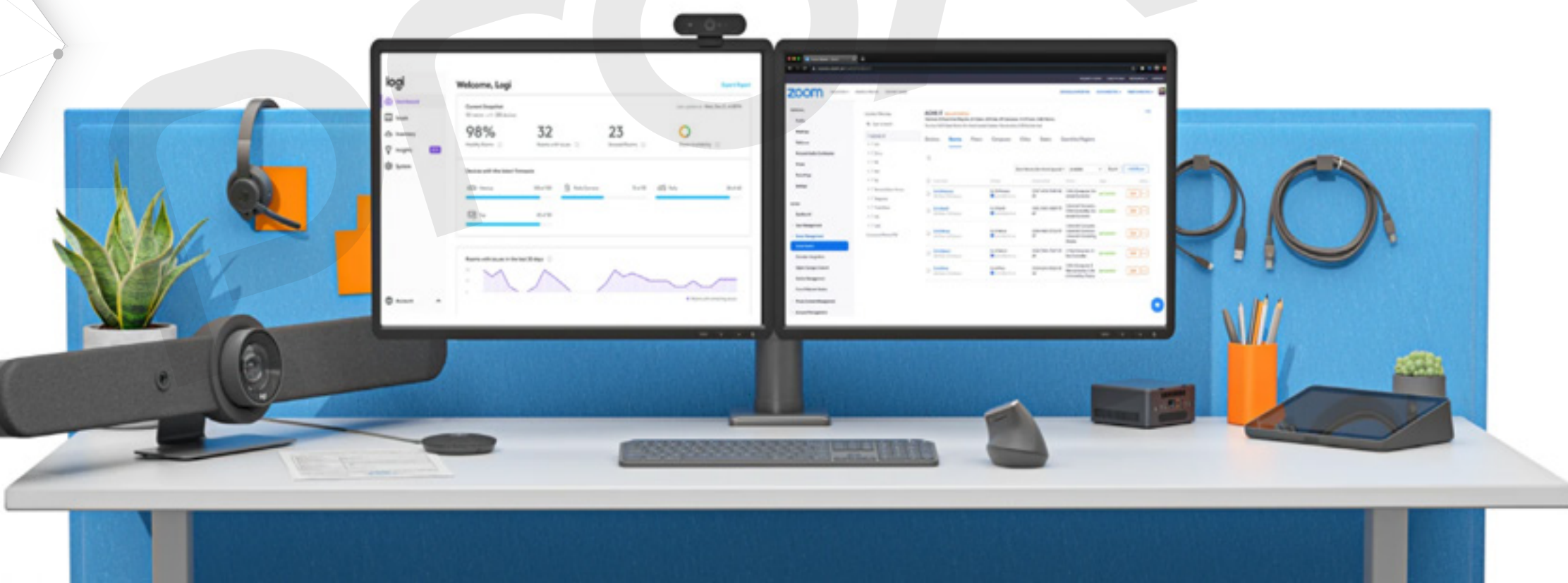
Pro Personal Video Collaboration kit



- Includes Logitech's most advanced BRIO webcam + ZONE WIRELESS Bluetooth headset
- Resolution/FPS: 4k Ultra HD 2160p/30fps, Full HD 1080p/30 or 60 fps, HD 720p/30,60 or 90 fps
- Sensor resolution: 4096 x 2160
- Diagonal field of view of 65°, 78°, and 90°
- Autofocus
- Digital zoom (Full HD): 5x
- Auto Light Correction: RightLight™ 3 with HDR
- Multiple mounting options, External privacy shutter, Infrared for supporting facial log-in, Background replacement labs project (powered by Personify3), Works with Cortana®
- Google Certified

Management Tools

Easily monitor and manage your meeting room devices
from Google Workspace Admin Console.



Introducing Logitech Sync

Remote management that scales to thousands of Logitech meeting room devices



MODERN DEVICE MANAGEMENT

Logitech Sync makes it easy to support large-scale video deployments while minimising site visits and trouble tickets—all from a simple browser-based interface.

A fresh approach to remote monitoring and device management simplifies tasks like firmware updates and feature enablement, while an API and forward-looking architecture establish a robust foundation for new insights and integrations.

Management

ROOM STATUS IN REAL TIME

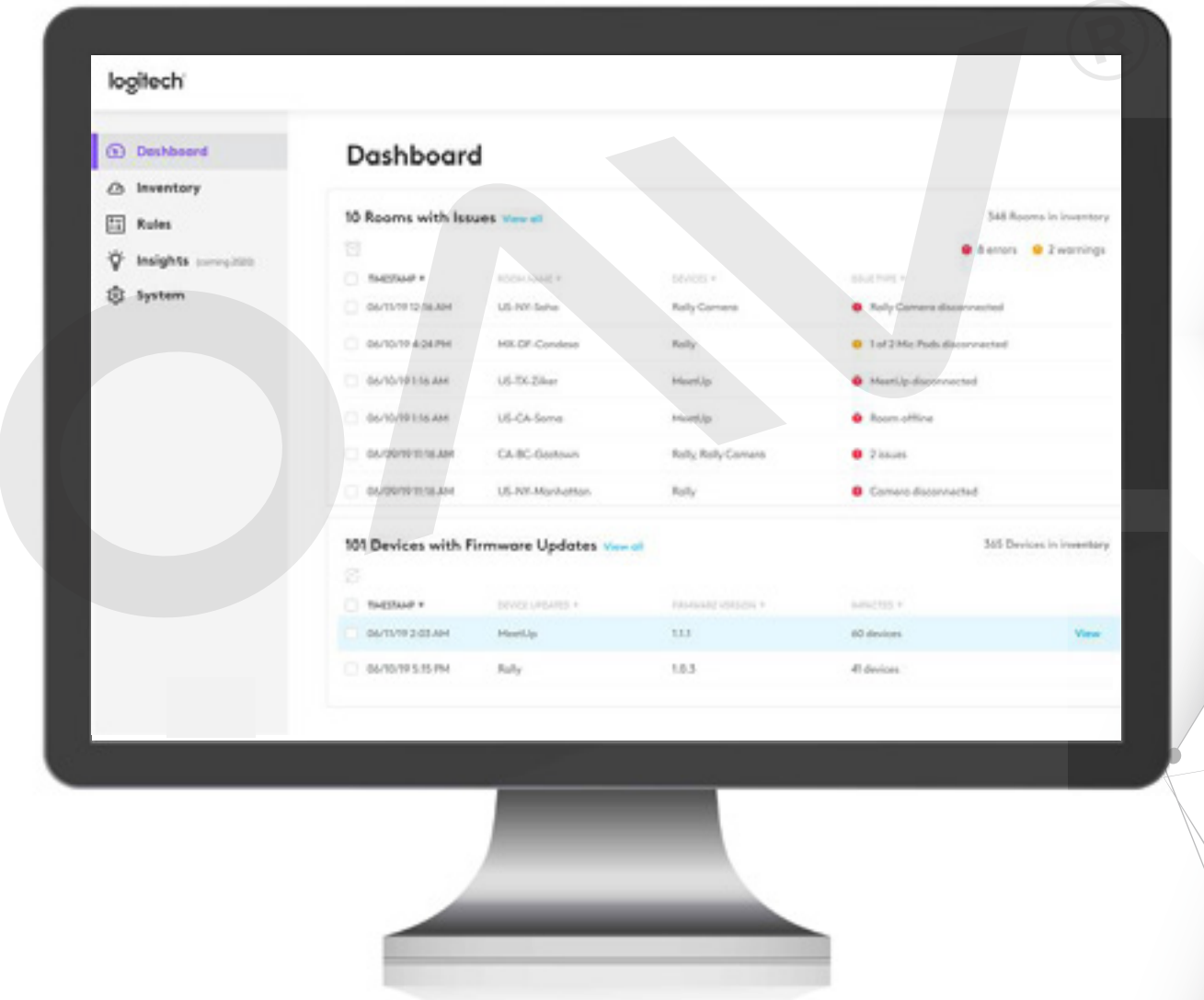
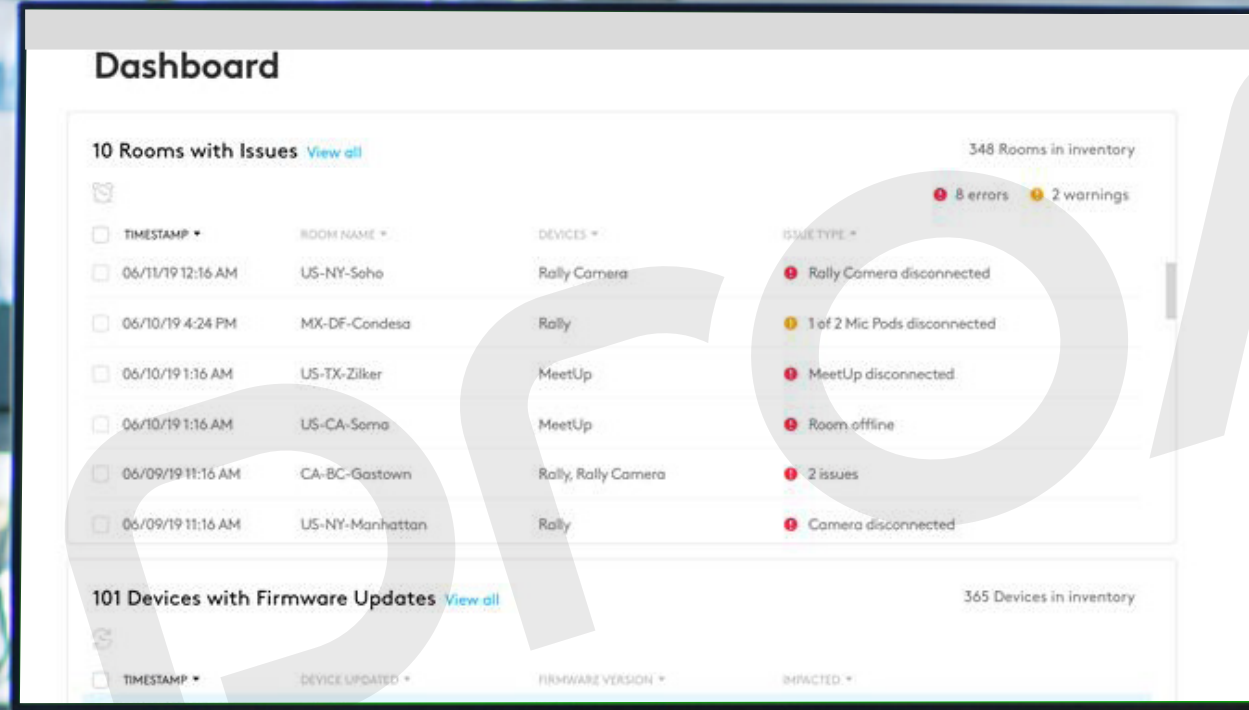
Don't wait for a panicked phone call or trouble ticket to surface problems like an offline room or disconnected device.

Sync automatically highlights issues that need your attention in real time and offers in-depth diagnostic info so you can resolve problems before they impact a meeting.

LET SYNC MAKE THE SITE VISITS

Thanks to a modern design that supports both on-demand and scheduled updates, Sync helps you deploy product upgrades and bug fixes to all of your rooms.

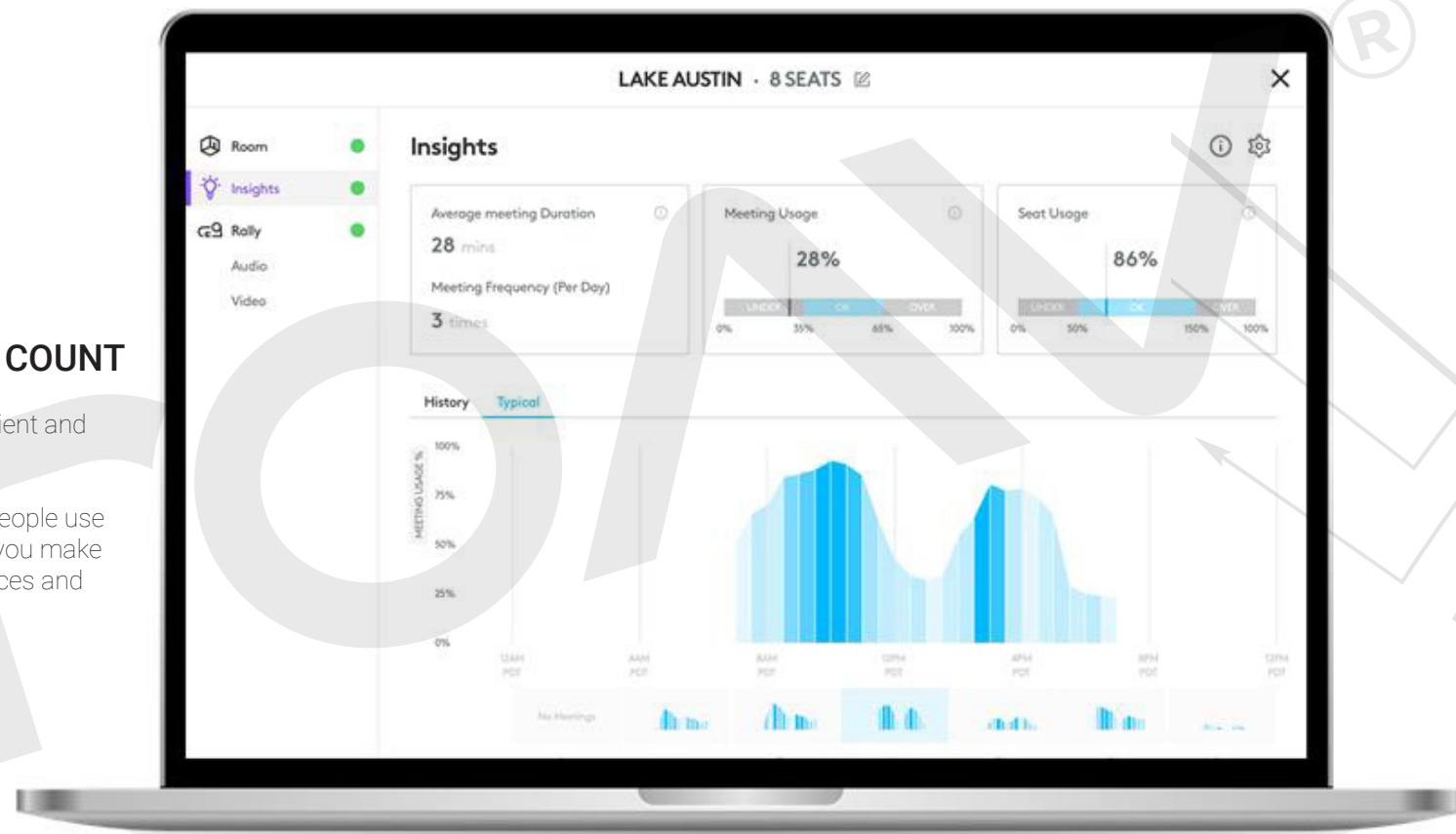
Simply select your devices, choose an action, and let Sync make it happen.



MAKE EVERY MEETING COUNT

Get insights that lead to more efficient and productive meetings.

Informed by rich data about how people use rooms and devices, Sync will help you make the most of your collaboration spaces and technologies



WHY SYNC

Sync offers easy and secure scalability, no matter how many rooms and devices you manage.



MODERN

Sync's intuitive and responsive interface is powered by a cloud-based architecture to accelerate deployment and simplify management



SECURE

Because Sync employs end-to-end encryption and neither collects nor transmits audio, video, or shared content, meeting data remains private and secure



SCALABLE

A capacity of more than 10,000 devices and a platform built for multitenancy make Sync an ideal solution for service providers and enterprise deployments



FREEMIUM

No licenses, no invoices, no maintenance fees. While Logitech will add new capability and value to Sync, core device monitoring and management is free



www.proav.com
uc@proav.com

proAV[®]